



# SERVICE IDEAS

MINI BOOK





SINCE 1946



## Why Service Ideas?

### Taking Pride in Customer Experience

We strive to provide the ultimate food and beverage experience. Whether it be dining in a restaurant, attending an event, or pouring a cup of coffee, we understand the importance of enhancing presentation without compromising the quality of food and beverage.



### Designing Products for Everyday Use

In 1998, we began a partnership with Fuu Hwa Vacuum Bottle Company. We've shaped this partnership around our shared value of always putting the customer first, along with a passion for product design, to deliver quality products that solve everyday problems in the foodservice industry.



### Foodservice Experience and Expertise

Now with over 123 years of combined experience between Service Ideas and Fuu Hwa, we work together creating products that serve the hospitality industry, worldwide.





**4** BUFFET



**12** AIRPOTS



**22** SERVERS



**32** TABLETOP



# BUFFET

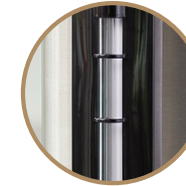
**5** THERMAL CONTAINERS

**6** COLD BREW SYSTEM

**8** COLD BEVERAGE DISPENSERS



# THERMAL CONTAINERS



**SIGHT GLASS**  
*Identify content levels*



**LOCKING SPIGOT**  
*Easy dispensing and serving*



**REMOVABLE DRIP TRAY**  
*Dishwasher safe*



GIU1GV2  
1 Gallon  
Brushed, Black



GIU15GV2  
1.5 Gallon  
Brushed, Black



GIU2GV2  
2 Gallon  
Brushed, Black

## COLD BREW 'N' SERV™ SYSTEM

- All-in-one brewer and dispenser
- Patent pending brew basket
- Holds 3 lbs. of coffee grounds yielding just under 3 gallons of cold brew
- Stays fresh for up to seven days with proper refrigeration



**CBNS3SS**  
3 Gallon | 3 lbs.  
Brushed, Black



**CBDT3SS**  
3 Gallons  
Brushed



**CBNS3BSKT**  
3 lbs. coffee grounds  
Black



**CBDTCONTKIT**  
Container, spigot, lid





## COLD BEVERAGE DISPENSERS

- Removable infuser and ice tube
- Self-storing containers
- Includes flavor ID labels
- BPA-free Tritan™ plastic
- Stainless and black plastic finishes are NSF listed
- New stainless spigot



**CBDRT3BSSS** - 3 Gallon  
**CBDRT5BSSS** - 5 Gallon  
Brushed

**DT6BS**  
Drip Tray  
Brushed



**CBDRT3BL**  
3 Gallon  
Black



**CBDRT3RGSS**  
3 Gallon  
Rose Gold

**DT6BSRG**  
Drip Tray  
Rose Gold



**CBDRT3DTSS**  
3 Gallon  
Dark Tungsten

**DT6BSDT**  
Drip Tray  
Dark Tungsten



**CBDRT3VGSS**  
3 Gallon  
Vintage Gold

**DT6BSVG**  
Drip Tray  
Vintage Gold





## DOUBLE DIAMOND DISPENSER

- Diamond pattern
- Ice tube and infuser tube included
- Constructed of 18/8 stainless steel and BPA-free Tritan™ plastic



CBDT3SSD  
3 Gallon  
Brushed



CBDT3SSDD  
6 Gallon  
Brushed



## LEVIGO BEVERAGE DISPENSER

- Smooth cylindrical body sits atop a stainless steel base
- Optional infuser tube for drink customization
- NSF listed for commercial use
- Constructed of 18/8 stainless steel and BPA-free Tritan™ plastic



LEV35GBSSS  
3.5 Gallons  
Brushed



# AIRPOTS

**13**

ECO-AIR®

**16**

SIGNA-AIR

**18**

 COLOR ME  
S-VAC

**20**

STEELVAC™

## ECO-AIR® AIRPOTS

- 5/6 lines are NSF listed
- Triple wall construction
- Stainless or glass lined
- Customizable
- Five capacities available
- Pump or lever lid





# ECO-AIR® AIRPOTS

*Our most customizable airpot!*



### Eco-Air® Smooth Body

ECA19S - Pump ECAL19S - Lever 1.9 Liter Glass Vacuum	ECA22S - Pump ECAL22S - Lever 2.2 Liter Glass Vacuum	ECA25S - Pump ECAL25S - Lever 2.5 Liter Glass Vacuum	ECA30S - Pump ECAL30S - Lever 3 Liter Glass Vacuum
---	---	---	---



### Eco-Air® Smooth Plastic

ECA22PBL - Pump  
ECAL22PBLK - Lever  
2.2 Liter  
Glass Vacuum



### Eco-Air® Ribbed Plastic

ECA22PBLMAT - Pump  
ECAL22PBLMAT - Lever  
2.2 Liter  
Glass Vacuum



### Eco-Air® Jeweled Body

ECAJ22SS - Pump  
ECAJL22S - Lever  
2.2 Liter  
Glass Vacuum



### Eco-Air® Sight Glass

ECA22SGY - Pump  
ECAL22SGY - Lever  
2.2 Liter  
Glass Vacuum

ECAL22PBLMATSG  
Lever Lid  
2.2 Liter  
Glass Vacuum



### Eco-Air® Stainless Lined

SECA19S - Pump  
SECAL19S - Lever  
1.9 Liter  
Stainless Vacuum



SECA22S - Pump  
SECAL22S - Lever  
2.2 Liter  
Stainless Vacuum

SECA25S - Pump  
SECAL25S - Lever  
2.5 Liter  
Stainless Vacuum

SECA30S - Pump  
SECAL30S - Lever  
3 Liter  
Stainless Vacuum

# SIGNA-AIR AIRPOTS

- Dent resistant outer shell
- 6-8 hours of temperature retention (glass vacuum)
- 4-6 hours of temperature retention (stainless vacuum)
- Snap-on, self storing flavor indicators in four colors
- NSF listed for commercial use
- Five capacities available



## Signa-Air Glass Lined

ENALG19S  
1.9 Liter  
Brushed

ENALG22S  
2.2 Liter  
Brushed

ENALG25S  
2.5 Liter  
Brushed

ENALG30S  
3 Liter  
Brushed



## Signa-Air Stainless Lined

ENALS22S  
2.2 Liter  
Brushed

ENALS25S  
2.5 Liter  
Brushed

ENALS30S  
3 Liter  
Brushed

ENALS37S  
3.7 Liter  
Brushed



ENALS22SCH  
2.2 Liter  
Brushed,  
Chrome Lid



ENALS25PBLMAT  
2.5 Liter  
Black





## COLOR ME S-VAC AIRPOTS

- Stainless vacuum insulation
- Double wall construction
- Removable lid and collar
- NSF listed for commercial use
- Four different capacities available
- Five lid colors available



CTAL22BL - 2.2 Liter  
 CTAL25BL - 2.5 Liter  
 CTAL30BL - 3 Liter  
 CTAL37BL - 3.7 Liter  
 Brushed, Black Lid



CTAL22BR - 2.2 Liter  
 CTAL25BR - 2.5 Liter  
 CTAL30BR - 3 Liter  
 CTAL37BR - 3.7 Liter  
 Brushed, Brown Lid



CTAL22BLU - 2.2 Liter  
 CTAL25BLU - 2.5 Liter  
 CTAL30BLU - 3 Liter  
 CTAL37BLU - 3.7 Liter  
 Brushed, Blue Lid



CTAL22OR - 2.2 Liter  
 CTAL25OR - 2.5 Liter  
 CTAL30OR - 3 Liter  
 CTAL37OR - 3.7 Liter  
 Brushed, Orange Lid



CTAL22GR - 2.2 Liter  
 CTAL25GR - 2.5 Liter  
 CTAL30GR - 3 Liter  
 CTAL37GR - 3.7 Liter  
 Brushed, Green Lid





## STEELVAC™ AIRPOTS

- Protective stainless steel shell
- 6-8 hours of temperature retention (glass vacuum)
- 4-6 hours of temperature retention (stainless vacuum)
- Orange decaf lids available
- Four capacities available
- Pump or lever lid



### Steelvac™ Glass Lined

GLAL220 - Lever  
GLAP220 - Pump  
2.2 Liter  
Brushed

GLAL250 - Lever  
GLAP250 - Pump  
2.5 Liter  
Brushed

GLAL300 - Lever  
GLAP300 - Pump  
3 Liter  
Brushed



### Steelvac™ Stainless Lined

SSAL250 - Lever  
SSA250 - Pump  
2.5 Liter  
Brushed

SSAL300 - Lever  
SSA300 - Pump  
3 Liter  
Brushed

SSAL375 - Lever  
SSA375 - Pump  
3.7 Liter  
Brushed



# SERVERS

**23** ELITE CARAFES

**26** ESSENTIAL CARAFES

**28** CLASSIC CARAFES

**29** FROTHING PITCHERS

**30** WATER PITCHERS



## ALTUS CARAFE

- 18/8 stainless steel construction
- NSF listed for commercial use
- Matching water pitcher



ALTU06BS  
0.6 Liter  
Brushed



ALTU10BS  
1 Liter  
Brushed



ALTU15BS  
1.5 Liter  
Brushed



# CLASSY™ CARAFE

- Heavy duty zinc-plated handle and collar
- Stainless lid
- 6-8 hours of temperature retention (glass vacuum)
- 4-6 hours of temperature retention (stainless vacuum)
- Push-button lid



## Stainless-Lined Carafe



CJZS6BS - 0.6 Liter  
CJZS1BS - 1 Liter  
Brushed



CJZS6CP - 0.6 Liter  
CJZS1CP - 1 Liter  
Copper



CJZS6CH - 0.6 Liter  
CJZS1CH - 1 Liter  
Chrome

## Glass-Lined Carafe



CJZ6BS - 0.6 Liter  
CJZ1BS - 1 Liter  
Brushed



CJZ6CP - 0.6 Liter  
CJZ1CP - 1 Liter  
Copper



CJZ6CH - 0.6 Liter  
CJZ1CH - 1 Liter  
Chrome

## Powder Coated Glass-Lined Carafe



CJZ1WHT  
1 Liter  
White



CJZ1RED  
1 Liter  
Red



CJZ1BLU  
1 Liter  
Blue



CJZ1BLK  
1 Liter  
Black



# STEELVAC™ ESSENTIAL CARAFE

- 5-year warranty on vacuum insulation
- 4-6 hours of temperature retention
- Works with an optional brew-thru lid, sold separately
- NSF listed for commercial use
- Dishwasher safe



## Steelvac™ Essential Carafe

FVPC12  
1.2 Liter  
Brushed

FVPC15  
1.5 Liter  
Brushed

FVPC20  
2 Liter  
Brushed



## Steelvac™ Etched Essential Carafe

FVP152PCTET - 2% Milk  
FVP15HALFET - Half & Half  
FVP15SKIMET - Skim Milk  
FVP15WHOLEET - Whole Milk  
1.5 Liter  
Brushed

# BREW 'N' POUR® CARAFE



**CLOCK TIMER**  
*Identify freshness and last brewed time*



**STAINLESS INSULATION**  
*Keeps contents hot for 4-6 hours*



**ERGONOMIC HANDLE**  
*Easy pour and control*



**SHORT BODY**  
*Fits under short and tall brewers*



BNP19V4 - Black Clock Lid  
BNP19ORV4 - Orange Clock Lid  
1.9 Liter  
Brushed



BNP19BL - Black Lid  
BNP19OR - Orange Lid  
1.9 Liter  
Brushed



BNP2  
Fits 2 Carafes  
Black Wire



# ALPHA CARAFE

- Glass vacuum for 6-8 hours heat retention
- Economical polypropylene plastic
- Push-button top



ALPH10BL  
1 Liter  
Black



ALPH10WH  
1 Liter  
White

# FROTHING PITCHERS

HOLE ABOVE HANDLE

STEAMS QUIETLY

ETCHED MEASUREMENTS



FROTH206  
0.6 Liter  
Brushed



FROTH326  
0.95 Liter  
Brushed



FROTH506  
1.5 Liter  
Brushed



FROTH646  
1.9 Liter  
Brushed







### SLIM WATER PITCHERS

- Small footprint makes it easy to fit multiples in small places
- NSF listed for commercial use



X7DWBS  
1.6 Liter  
Brushed



X7025BSVG  
1.9 Liter  
Vintage Gold



X7025BSRG  
1.9 Liter  
Rose Gold



X7025BSDT  
1.9 Liter  
Dark Tungsten

### STAINLESS WATER PITCHERS

- 18/8 stainless steel construction
- With or without ice guard options
- Dishwasher safe
- Brushed finish reduces fingerprints



ALTUWPBS  
2 Liter  
Brushed



VESIWPBS  
2 Liter  
Brushed



WPB2BS  
2 Liter  
Brushed



WPB2BSNG  
2 Liter  
Brushed



# TABLETOP

- 33** HOT SOLUTIONS™ PLATTERS
- 34** SERVING TRAYS
- 36** PARTY TUBS
- 37** ICE BUCKETS
- 38** SHAKERS & CADDIES



## HOT SOLUTIONS™ PLATTERS

- Lasts four times longer than a traditional wood platter
- Ceramic core traps heat at 200°F
- Continuous support flange traps hot air
- Lightweight insulation and heat core keeps platter cool to the touch



HS13BL3  
10" X 7.5"  
Black



HS15BL2  
9.25" X 9.25"  
Black



# SERVING TRAYS

- Rectangle or round trays available
- Constructed of 18/8 stainless steel
- Rubber mat helps control unnecessary spills
- Stackable



TR1614RI  
16" X 16" (14" X 14")  
Brushed



TR1412RIDT  
14" X 14" (12" X 12")  
Dark Tungsten



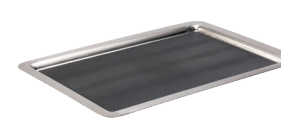
TR1412RIRG  
14" X 14" (12" X 12")  
Rose Gold



TR1412RIVG  
14" X 14" (12" X 12")  
Vintage Gold



TR119SR  
11" X 11" (9" X 9")  
Brushed



TRRT2014SR  
20.5" X 14.75" X 1.5"  
Brushed



TRRTH2012BS  
20.75" X 12.5" X 2.75"  
Brushed





## PARTY TUBS

- Double wall construction
- Keeps cold and helps prevent condensation
- 18/8 stainless steel construction resists corrosion
- Brushed finish reduces fingerprints



PT2BS  
2 Gallon  
Brushed



PT7BS  
7 Gallon  
Brushed



## ICE BUCKETS

- 18/8 brushed stainless steel with polished accents
- Double wall insulation keeps ice cold and prevents condensation
- Black plastic ice bucket constructed of ABS plastic



IB3BS  
3 Liter  
Brushed



IBSQ3BS  
3 Liter  
Brushed



IBT15BS  
1.5 Liter  
Brushed



IB3BL  
3 Liter  
Black



# SHAKERS & CADDIES

- Constructed of 18/8 stainless steel
- Mix and match shaker tops
- Available etched or not etched
- Shakers fit perfectly in compartment caddies



## Stainless Shakers



**Mesh Top**  
STCMESH  
Plain  
STCMESHNUTM  
Nutmeg  
STCMESHPSUGR  
Powder Sugar



**Teardrop Top**  
STCTEAR  
Plain  
STCTEARCOCOA  
Cocoa



**Multi-hole Top**  
STCMULTI  
Plain  
STCMULTICINN  
Cinnamon



**Seven-hole Top**  
STC7  
Plain  
STC7VANILLA  
Vanilla

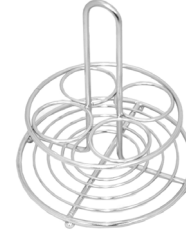


**Three-hole Top**  
STC3  
Plain

## Condiment Caddies



STOH2V2  
Polished



STOH4  
Polished

## Cream & Sugar Accessories



SPH5BL  
Black



STCCRS4  
Brushed



SSC85  
Brushed



STCCRS4TRC  
Polished



## Contact Service Ideas

2354 Ventura Drive  
Woodbury, MN 55125  
United States

**telephone:** 651-730-8800  
**toll-free:** 800-328-4493

**[www.serviceideas.com](http://www.serviceideas.com)**

**customer service:**  
[cs@serviceideas.com](mailto:cs@serviceideas.com)

**International Contact:**  
Keith Enscoe  
*Director of Business Development*  
[keithe@serviceideas.com](mailto:keithe@serviceideas.com)  
502-905-8263



## **Service Ideas, Inc.**

2354 Ventura Drive  
Woodbury, MN 55125

telephone: 651-730-8800  
toll-free: 800-328-4493

please send orders to:  
[orders@serviceideas.com](mailto:orders@serviceideas.com)

**[www.serviceideas.com](http://www.serviceideas.com)**

connect with us on:

